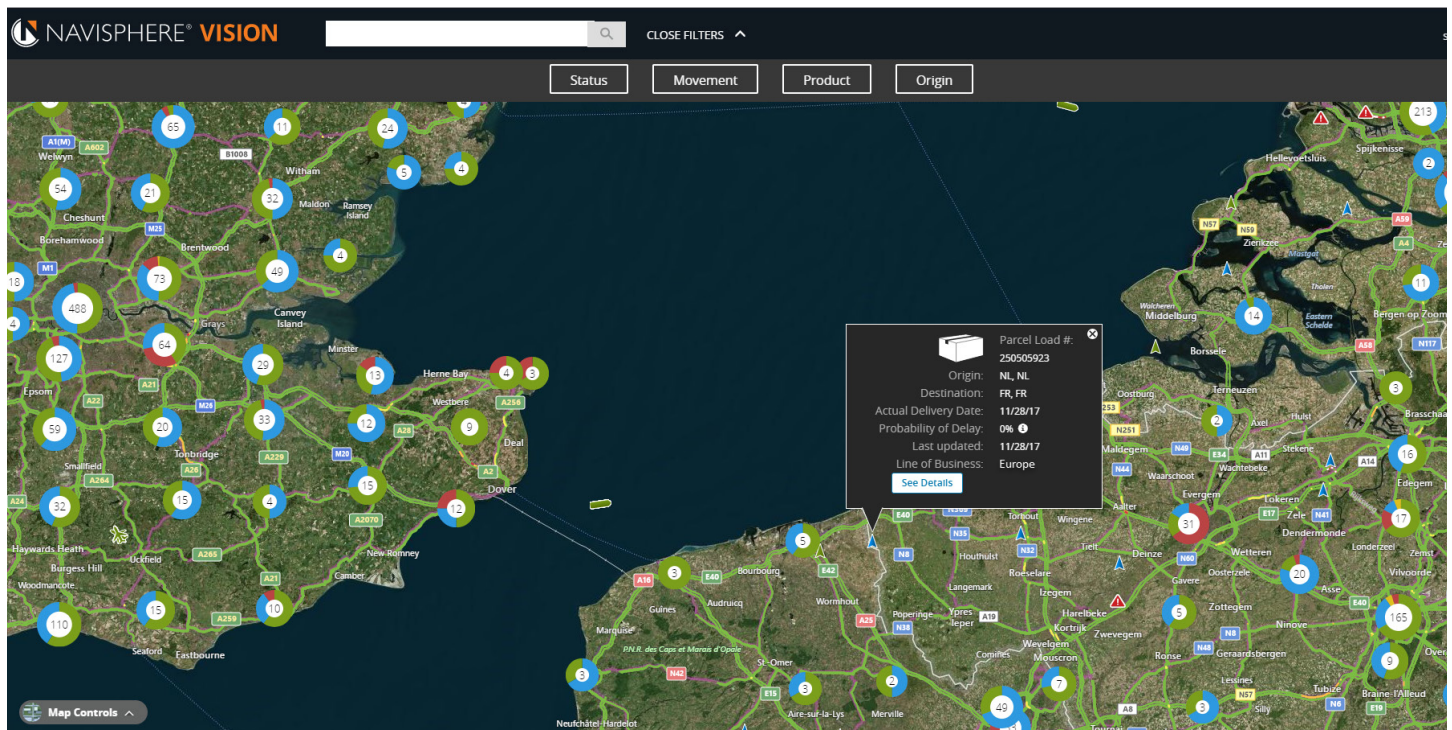


**See more, know more, and do more. In all geographies, across all modes.**

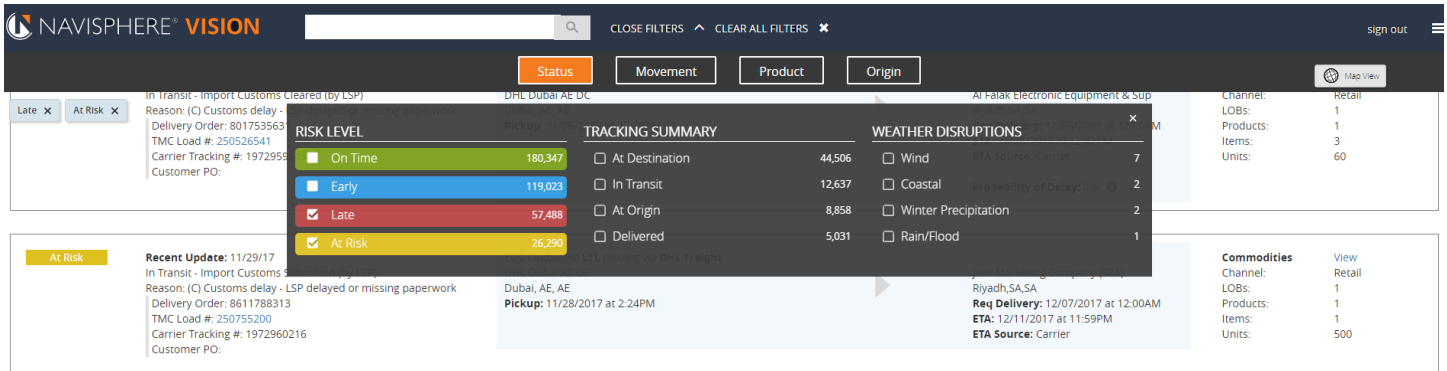
The ultimate solution for global supply chain visibility is here, brought to you by Navisphere®. Navisphere Vision combines real-time order and shipment information with proactive transportation updates and alerts about external factors that can influence your supply chain—wherever in the world your shipments are—before they become disruptions.

Navisphere Vision is a licensed software as a service (SaaS) platform; total costs are based on an annual licensing fee and total shipment volume. The implementation timeframe varies, as several factors—such as resource availability, the level of configuration requested, and more—impact the process.

**Get a detailed view of your global shipments in real time.** Drill down to the order-level details and status updates of ocean vessels, airplanes, trucks, or trains anywhere in the world.



**Focus your attention on your highest priorities.** With active shipment filtering, you can proactively track, monitor, and react to disruptions.



	Feature	Benefit
See more	<p>Global shipment status map, including final mile and small parcel</p> <p>Integration of external disruption factors:</p> <ul style="list-style-type: none"> <li>• Weather</li> <li>• Traffic</li> <li>• Crowd sourced events</li> </ul>	<p>Real-time visibility for all modes, in all regions around the world.</p> <p>Proactively track, monitor, and react to disruptions before they occur through predictive analysis and disruption modeling.</p> <p>Improve control of inventory in motion and drive savings by decreasing safety stock.</p>
Know more	<p>Alert notifications</p> <p>Role-based security and customized views</p> <p>Data quality and carrier scorecards</p> <p>Executive data visualization dashboard</p>	<p>Be the first to know about shipment status updates, delay notifications, or disruptions so you can improve service to your customers.</p> <p>Allow customers access to view their shipments.</p> <p>See your global supply chain via an executive view that provides key statistics and summarized insights.</p> <p>Drive data accuracy and compliance with your supply chain providers to improve performance and visibility.</p>
Do more	<p>Active shipment filtering</p> <p>In-app messaging</p> <p>Artificial Intelligence (AI)*</p>	<p>Reduce distractions and focus your attention on the highest priorities.</p> <p>Improve collaboration and communication with your internal team and customers.</p> <p>Let the system take action on your behalf to optimize decision-making and improve employee productivity.*</p>

\*AI action requires several years' worth of data and additional signoff based on a review of machine-generated rule sets

